

**TRANER**  
MIDDLE SCHOOL



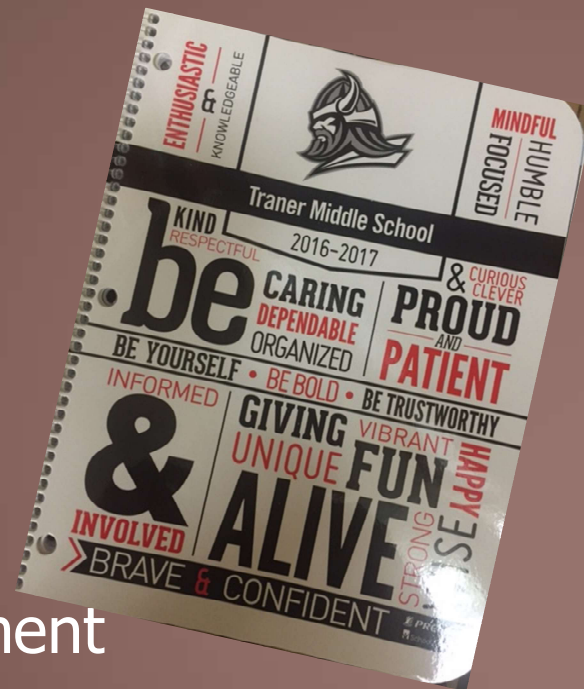
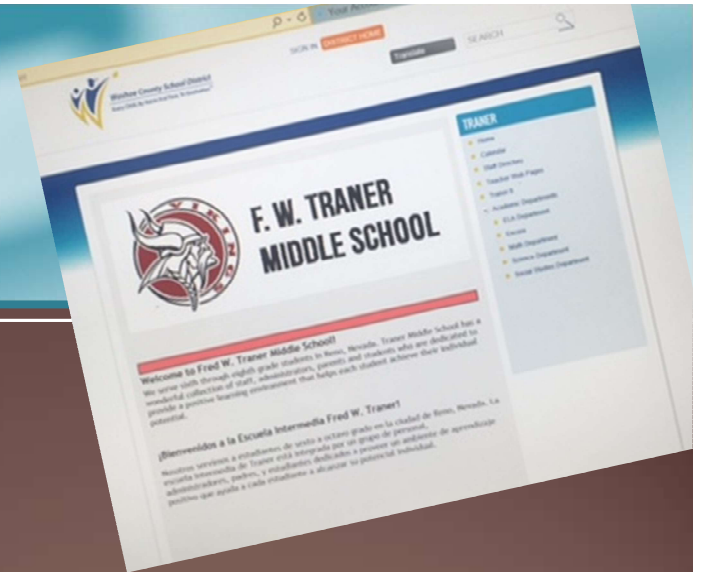
**HOME OF THE  
VIKINGS**

**Welcome to Traner  
Middle School  
Home of the Vikings!**



# Keep Updated

- Check out our website  
<http://www.washoeschools.net/Page/2078>
- Infinite Campus
- ConnectEd calls
- Parent Events
- Planners
- Set up a Home Visit
- Concerns???
- Call us to set up an appointment



# Meet your Administrators



Assistant Principal  
Melisa Chavez



Assistant Principal  
Eddie Hirschman



# Traner Middle School Office Staff



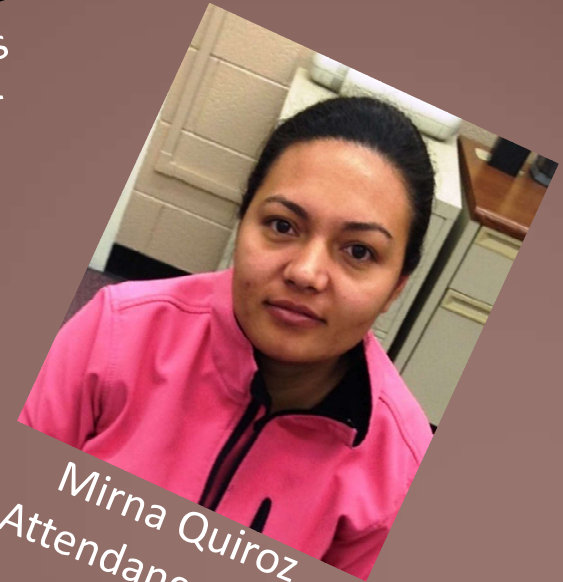
Michelle Zukovsky  
Admin Secretary



Alli Reeves  
Registrar



Josefina Martinez  
Parent Involvement Facilitator



Mirna Quiroz  
Attendance Clerk

# Traner Middle School

## Motto – Mission - Vision

**Mission – Traner Middle School will provide a quality middle school education to prepare all students to maximize individual potential and be productive citizens in a rapidly changing, technology-driven world.**



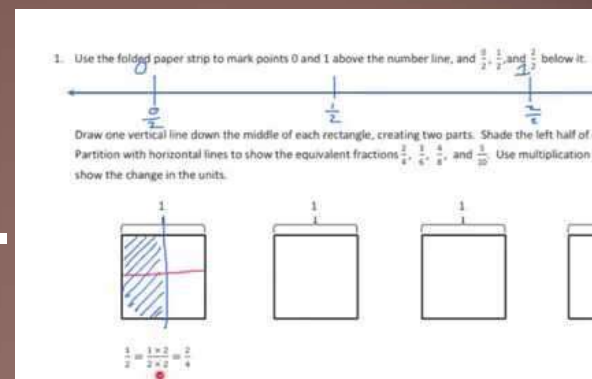
# What makes us special?

## Academics

- 21<sup>st</sup> Century Learning School
- One-to-one technology
- Achieve 3000
- Research-based mathematics
- Instructional materials and resources.
- Spring Board Pre-AP Curriculum
- Tiered Reading Intervention program
- Tiered math supports
- AMAZING TEACHERS!!!!!!



ACHIEVE3000®



CollegeBoard  
SpringBoard

# What makes us special?



## Advanced Classes

- Advanced Mathematics courses of study to allow for exposure in HS level Algebra.
- Advanced /Honors level ELA classes.

## The Traner Community

- Traner Network News
- Monthly Student Incentives for Positive Behavior
- Home Visit Program
- Intersession





# General School Rules / Guidelines

- AM – Enter through the Rear
- School Hours
  - Morning bell rings at 7:22am. At 7:30am you must be in your seat or you will be tardy.
  - End of Day bell rings at 2:00pm (1:15 on Wednesday)
  - Buses leave at 2:07pm
  - No students prior to 7am or after 2:15pm
  - Office hours 7:00am – 3:00pm
- Uniform
- Breakfast and Lunch served daily
- Lockers
- Follow rules and expectations outline in student handbook



# Attendance Procedure Changes

- Make-Up Work
- Chronic Absenteeism - Retention
- Absences changing to Instructional Related Activities (IRA/MET)
- Parents – Check IC
- Student – Request make-up work when you return. Must be completed within the number of absence days plus one.
- Teacher – Provide work within 2 days of request.

<https://www.washoeschools.net/Page/8789>

# 2019-2020 Bell Schedule

## Regular School Day Schedule

1 <sup>st</sup> Lunch Schedule		2 <sup>nd</sup> Lunch Schedule	
4 <sup>th</sup> Period Teacher = Cuitino, Hartman, Hawkins, Helmrieck, Kirkwood, Mack, Marble, March, Pratte, Sattler, Starr, Turner & Van Buskirk		4 <sup>th</sup> Period Teacher = Baran, Connor, Dickens, Dodge, Eggers, Filicchia, Kay, Nevins, O'Brien, Ruth, Trevino, West & Wilson	
Enrichment	7:30 – 8:19	Enrichment	7:30 – 8:19
Period 1	8:22 – 9:11	Period 1	8:22 – 9:11
Period 2	9:14 – 10:03	Period 2	9:14 – 10:03
Period 3	10:05 – 10:54	Period 3	10:05 – 10:54
Lunch	10:54 – 11:24	Period 4	10:57 – 11:46
Period 4	11:29 – 12:18	Lunch	11:46 – 12:16
Period 5	12:21 – 1:09	Period 5	12:21 – 1:09
Period 6	1:12 – 2:00	Period 6	1:12 – 2:00

## Wednesday Early Release Schedule

1 <sup>st</sup> Lunch Schedule		2 <sup>nd</sup> Lunch Schedule	
4 <sup>th</sup> Period Teacher = Cuitino, Hartman, Hawkins, Helmrieck, Kirkwood, Mack, Marble, March, Pratte, Sattler, Starr, Turner & Van Buskirk		4 <sup>th</sup> Period Teacher = Baran, Connor, Dickens, Dodge, Eggers, Filicchia, Kay, Nevins, O'Brien, Ruth, Trevino, West & Wilson	
Enrichment	7:30 – 8:13	Enrichment	7:30 – 8:13
Period 1	8:16 – 8:58	Period 1	8:16 – 8:58
Period 2	9:01 – 9:43	Period 2	9:01 – 9:43
Period 3	9:46 – 10:28	Period 3	9:46 – 10:28
Lunch	10:28 – 10:58	Period 4	10:31 – 11:13
Period 4	11:03 – 11:45	Lunch	11:13 – 11:43
Period 5	11:48 – 12:30	Period 5	11:48 – 12:30
Period 6	12:33 – 1:15	Period 6	12:33 – 1:15

# NR 21 – One-to-One Technology



ONE  
to ONE

Digital Teaching & Learning Initiative



# Digital Learning At Traner





# School Counselors



Jessica Olson  
6th Grade Counselor



Elizabeth Tamietti  
8th Grade Counselor



Gilbert Rodriguez  
7th Grade Counselor



# Viking Day 2019!

August 1<sup>st</sup> 2019

- Students will receive schedules
- Receive locker combinations
- Purchase School and PE uniforms
- Take a tour of the school
- Meet your teachers
- Online Registration
- Check out student laptop
- Meet your counselor

# Tips for parents

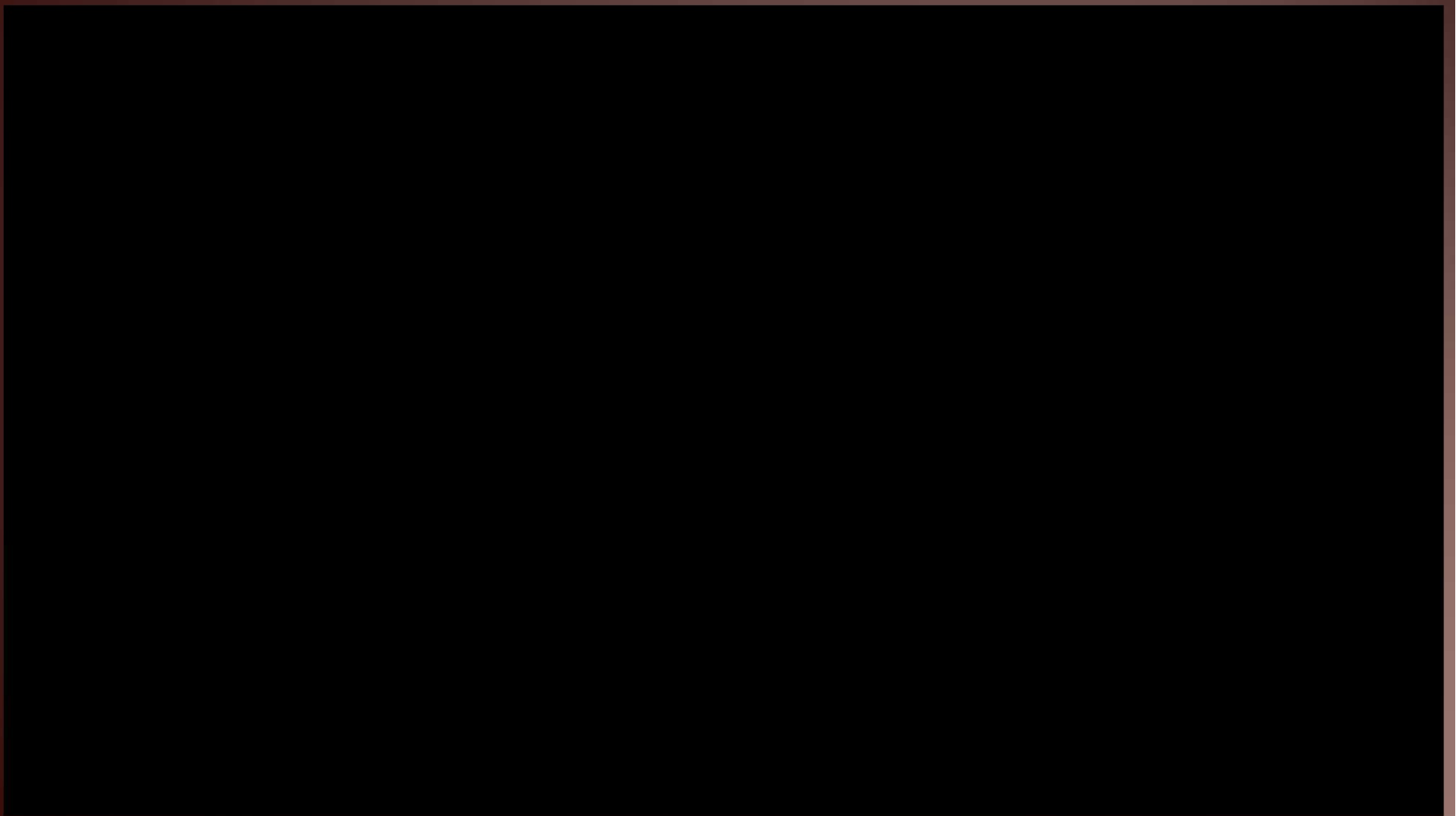
- Maintain a good relationship with your child and their teachers
- Ask them how their day was and what they learned in school
- Visit the school or volunteer at the school
- Attend meetings
- Make sure your child attends school every day, on time
- Set high expectations for your child
- Encourage your child
- Hold your child accountable
- Talk to your child about the importance of an education

# Tips continued

- Set aside a quiet place and time for your child to study/complete homework
- Assist with homework or check their homework every day
- Encourage reading at home everyday
- Get involved, research shows that when parents are involved students have:
  - ✓ **Better school attendance**
  - ✓ **Increased motivation**
  - ✓ **Higher self esteem**
  - ✓ **Lower rates of suspension**
  - ✓ **Decreased use of drugs and alcohol**
  - ✓ **Greater numbers enrolling in college**



# Welcome Video



# Elective Registration

## TRANER MIDDLE SCHOOL 6th Grade, 2019/2020

Student Info: LAST NAME \_\_\_\_\_ FIRST NAME \_\_\_\_\_

STUDENT ID # \_\_\_\_\_ Grade \_\_\_\_\_ Current School \_\_\_\_\_

- Please rank all elective choices, rating them **1-3 with 1 being the most preferred** for your elective. Please return the form to your teacher.

\_\_\_\_\_ **Band**- Students who wish to learn a band instrument including: flute, clarinet, saxophone, trumpet, trombone, tuba, and percussion.

\_\_\_\_\_ **Orchestra**- Welcomes students who wish to play violin, viola, cello or bass.

\_\_\_\_\_ **Choir**- Students to learn the basic skills of singing, playing and reading music.

## TRANER MIDDLE SCHOOL 7<sup>th</sup> 8<sup>th</sup> Grade, 2019/2020

Student Info: LAST NAME \_\_\_\_\_ FIRST NAME \_\_\_\_\_

STUDENT ID # \_\_\_\_\_ Grade \_\_\_\_\_ Current School \_\_\_\_\_

- Please rank all elective choices, rating them **1-7 with 1 being the most preferred** for your elective. Electives are listed on this form below. Return the form to your music teacher. We will do our best to give you the requested elective; however, due to schedule constraints and class size requirements we cannot guarantee that the elective chosen will be available.

\_\_\_\_\_ **Band**- Students who wish to learn a band instrument including: flute, clarinet, saxophone, trumpet, trombone, tuba, and percussion.

\_\_\_\_\_ **Orchestra**- Welcomes students who wish to play violin, viola, cello or bass.

\_\_\_\_\_ **Mariachi**- This course is designed for students to perform in an ensemble on trumpet, violin, guitar, vihuela or guitarrón.

\_\_\_\_\_ **Choir** – Students to learn the basic skills of singing, playing and reading music.

\_\_\_\_\_ **21<sup>ST</sup> Century Learning**- The 21st Century Learning course provides a framework for students to use these career-minded skills to create projects and extend their knowledge in engaging ways like web design, engineering projects, coding, and video editing.

\_\_\_\_\_ **Art** - This class will explore units in drawing, coloring, painting, and multi-media and will apply these skills to various art works to be displayed around the school and in school activities.

\_\_\_\_\_ **Sociology**- Students will be introduced to and examine sociology with an emphasis on social justice issues in the United States. While the focus of the class will primarily be on the topics of race, class, gender, and the social movements associated with them.

\_\_\_\_\_ **PE**- Physical Education is an activity class where the students will be introduced to a variety of sports. ☐ **Check box if you would like PE all year**

\_\_\_\_\_ **Spanish 1**- Students begin their introduction to Spanish by focusing on the four key areas of foreign language study: listening, speaking, reading, and writing.

\_\_\_\_\_ **Spanish for Spanish Speakers** – The purpose is to maintain and further develop Spanish language skills in listening, speaking, reading and writing. Enabling students to use their language skills to communicate with a variety of audiences and for a variety of purposes: personal, social academic and beyond.

# NEVADA School Performance Framework

- Schools receive points based on student performance across various indicators and measures ... these include the following:
  - Academic Achievement
  - English Language Proficiency
  - Student Engagement (attendance)
  - Growth
  - Closing Opportunity Gaps

# How is the Star Rating Determined?

- Points are totaled and divided by the points possible to generate an index score from 1-100. Index scores are associated with a one- to five-star rating as follows:
  - Below 27 = 1 STAR
  - At/above 27, less than 50 = 2 STARS
  - At/above 50, less than 67 = 3 STARS
  - At/above 67, less than 84 = 4 STARS
  - At/above 84 = 5 STARS





# Traner 2018-19 school rating

Index Score = 34.5

Rating = 2 STAR

# Comprehensive Support & Improvement (CSI) Designation

- Traner was designated as a CSI school in 2017-18
- 2018-19 Traner data reflect continued CSI status
- CSI schools are identified as being at or below performance of the lowest 5<sup>th</sup> percentile of Title I school performance and 1 Star status

# Traner's 2018-19 School Performance Plan

- Objective #1
- Increase percentage of students at or above grade level in ELA from 20% to 24%.
- 2018-19 Proficiency in ELA = 25%
- GOAL MET

# Traner's 2018-19 School Performance Plan

- Objective #2
- Increase percentage of students at or above grade level in Math on the SBAC from 17% to 20%
- 2018-19 SBAC Math Proficiency = 16%
- GOAL NOT MET





# Progress on School performance Plan Goals

## Possible Barriers to Improvement in ELA & Math Proficiency

- Need for aligned practices across grade levels to ensure a guaranteed & viable curriculum
- Lack of time for teacher professional collaboration
- Need for more purposeful and intentional focus on student learning to drive all practices across school community

# 2019-20 School Performance plan goals

- Professional Development– Priority focus on a.) Professional Learning Communities & b.) ELA curriculum and support materials including Springboard and Achieve 3000
- Family Engagement– More intentional partnership with families via engaging events and Home Visits to support academic needs in school community; move towards student-led conferences & offering relevant Parent University courses
- Curriculum & Instruction – Increase rigor to support higher levels of proficiency and growth in ELA & math (accomplish this through more structured approach to PLC process & implementation of ELA curriculum with fidelity)



Let's Have a Great Year!